

# Cable Releases

Volume 79 Number 12

## President's Message



### SPS Moves Forward

In the past few months we've been trying some new activities at SPS meetings. We're trying to make the club more interesting and more educational.

At the October and December Print nights we tried a new meeting format--Small Group Critique. Instead of having a commentator, we broke into groups of about five people and separated to various corners of the room. One of the groups consisted of the 3 judges and the tabulator. We divided the small prints into four sets (there were about four prints in each set) and gave one set to each group. After ten minutes, we rotated the prints. When the judges' group received a set of prints, they scored them and recorded the scores. After the four 10-minute time periods, we had a break and displayed the prints in the back of the room so everyone could vote for People's Choice. After the break we repeated the whole thing with the large prints.

This format has some disadvantages compared to our usual Print Night format, but I think they are more than outweighed by the advantages. Everyone gets a closer look at the prints. Everyone gets a chance to contribute to the discussion, even those who may be hesitant to speak out in a larger group. We get the chance to learn and practice evaluation skills. The groups have the option of allotting more of their time to discussing the work of the members of that group, so that there's the possibility of getting more feedback about one's own image. We have a chance to get to know each other better.

We're still working out some of the wrinkles. We have an easel and lamp for each group now, but need some adjustments in order to have optimal lighting. Everyone wonders what is said about his or her image in the other groups, so we're trying to figure out a system

### Inside this issue:

Announcements	3
Projected Division 1st Tuesday Results	4
Projected Division 1st Tuesday Images	5
Print Division Results	6
From the Board	7
Projected Division 3rd Tuesday Results	8
Projected Division 3rd Tuesday Images	9
Assignment	10
Field Trip Report	11

*Cable Releases* is the  
official publication of the  
Seattle Photographic  
Society and is published  
monthly. Articles by  
members are greatly  
appreciated.

**Officers**

President Alicia Richards  
 Vice Pres. Julee Ann Jackson  
 Secretary Rebecca Scott  
 Treasurer Douglas McArthur

**Directors**

Fred Fu  
 Fran McCullough  
 Garrett Munger  
 Mike Livdahl  
 Sam Ruljancich

**Digital Coordinator**

James Downar

**Membership Coordinator**

Eugene Collias

**Newsletter Editor**

Sheri Diggins

**Print Division Coordinator**

Alan Moodie

**Projected Division Coordinators**

Julee Ann Jackson  
 Alicia Richards

**Website**

Alicia Richards

for note-taking. Now that we have had some practice at it, it seems easier for the groups to get through all the prints in the 10 -minute time segment. Over all, I have to say that I feel this experiment is a success.

We've tried to increase the variety of our projected image meetings by asking members to bring framed or matted prints, calendars, books, or other photo items to display. We had a good response for the first meeting at which we did this; please keep bringing things in to share. We would also like to have slideshows or other short presentations (under six minutes) at the beginning of each of our 3rd Tuesday meetings. Eugene Collias presented his slideshow "This Land is Your Land" in November, and Sam Ruljancich will show one on December 20. If you would like to do this, let me know; I will put you on the schedule.

We're going to begin 2012 with a brand new opportunity to leave your comfort zone--the Photography Challenge of the Month. Bring your ideas for a challenge to the January 3 projected image meeting, or send them to Mike Livdahl. He'll put them all in a hat, draw one at random, and announce the challenge for the coming month. We will show the images taken in response to that challenge on February 7 before our regular entries. There won't be any judging or commentary on them--this is just for fun. Besides the Challenge of the month, there will also be the January 17th Altered Reality Division Assignment of "Green."

Are you interested in participating in field trips? Show up after our regular projected image meeting on January 17. We'll be discussing where we'd like to go for the coming year.

There's a lot going on! Please, let us know what you think about the things we're trying. You can write to me at [president@seattlephotographic.com](mailto:president@seattlephotographic.com) or to the entire board at [board@seattlephotographic.com](mailto:board@seattlephotographic.com).

Alicia Richards,  
 President

*SPS is a member of the  
 Photographic Society of  
 America and the  
 Northwest Council of  
 Camera Clubs.*



## Digital Director Needed

Many thanks to Jim Downar for serving SPS as our Digital Director since 2008. He has done an excellent job; we could always count on him to keep things running smoothly. Due to his current work circumstances, he is unable to continue in the role. Would you be willing to take on this position? Can you think of someone else in the club who might? A description of the responsibilities of the Digital Director is below:

The main responsibility of the Digital Director is collecting digital projected images and setting up and running the slide show at the two Projected Image Nights each month. This involves sending out weekly reminders about meetings, collecting images, checking to ensure images meet submission requirements for size and category content, organizing images into a slideshow and preparing entry forms. On the nights of projected meeting, the Digital Director is responsible for arriving a little early to get set up – computer, projector, screen, etc. – and being ready to accept additional images which are brought to the meeting by members, and get them added to the slide show and entry forms.

Additional responsibilities include updating the membership e-mail list, working with outside speakers to ensure everything is prepared for their presentations, and assisting with the year-end competition. Also, as a full member of the Board, the Digital Director is involved with setting the direction of the club and ensuring the continued growth of the Seattle Photographic Society.



## Projected Image Division

November 1, 2011

Maker	Title	Medium	Score	Award	PC
Open Category - Assignment - HDR					
Ian Chapin	<i>Willamette Valley</i>	Digital	39	1st *	
Doug McArthur	<i>Discovery Park Lighthouse</i>	Digital	39	1st *	
Rona Zevin	<b><i>Don't Bogart That Bike</i></b>	Digital	39	1st *	
Jim Downar	<i>Orchid</i>	Digital	38	2nd	
Fred Fu	<i>Hallway</i>	Digital	38	2nd	
Ravi Mantena	<i>Vortex of Memphis</i>	Digital	38	2nd	
Peggy Curtis	<i>Palouse Barn</i>	Digital	37	3rd	
Fran McCullough	<i>Paradise</i>	Digital	37	3rd	
Mike Livdahl	<i>Market Ghosts</i>	Digital	37	3rd	
Kathy Admire	<i>Spring Comes to the Palouse</i>	Digital	37	3rd	
Sheri Diggins	<i>Schoolhouse</i>	Digital	37	3rd	PC
Jerry Dunbar	<i>Cityscape With Roll-On Building</i>	Digital	36		
Becky Scott	<i>Everest Climbers Memorial</i>	Digital	36		PC
Richard Hamann	<i>Mt. Rainier, East Side</i>	Digital	36		
Robert Rutkin	<i>Standing Guard</i>	Digital	36		
Al Koskie	<i>Golden Dune</i>	Digital	36		
Gretchen Thompson	<i>Eastern Sierra Shack</i>	Digital	36		
Justin Engelman	<i>Seattle Nighttime Skyline</i>	Digital	35		
Jon Mack	<i>Lake Elizabeth Autumn</i>	Digital	35		
Alicia Richards	<i>Dungeness Spit</i>	Digital	34		
Chris Diepenbrock	<i>Softness of the Alabama Hills</i>	Digital	34		
Dale Chase	<i>Boat Hoists at Shilshole</i>	Digital	33		
Nature Category					
Greg Bang	<i>Early Morning Sun, Kruger NP, South Africa</i>	Digital	39	1st *	PC
Ginger Jeromchek	<i>After The Rain</i>	Slide	39	2nd *	
Sam Ruljancich	<i>Mt. Baker Range</i>	Digital	38	2nd	
Julee Anne Jackson	<i>Mourning Cloak Butterfly</i>	Slide	36	3rd	
Wendy Engquist	<i>Beginning of Fall #1</i>	Digital	35		
Altered Reality Category					
George Ferrara, APSA	<i>Lily Swirl</i>	Digital	41	1st *	PC
Garet Munger	<i>Magnolia</i>	Digital	38	2nd	
Maurene Rutkin	<i>Industrial Infusion</i>	Digital	38	2nd	
Suvro Datta	<i>Happy Halloween</i>	Digital	38	2nd	
Norman Share	<i>Cannibal Cactus</i>	Digital	34		



Rona Zevin  
*Don't Bogart That Bike*



Jim Downar  
*Orchid*



Jon Mack  
*Lake Elizabeth Autumn*

\* Each image receiving one of the two highest scores in its Category earns one Merit Point.  
PC – **People's Choice** – This image was voted best in its Category by persons present.

Projected Director Julee Anne Jackson  
Digital Director Jim Downar  
Commentator Audience and the maker  
Judges Ravi Mantena, Wendy Engquist, and George Ferrara, APSA



Ian Chapin *Willamette Valley*



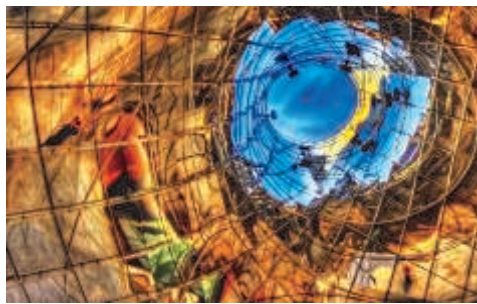
Doug McArthur *Discovery Park Lighthouse*



Greg Bang  
*Early Morning Sun,*  
Kruger NP, South Africa



Fred Fu Fred Fu *Hallway*



Ravi Mantena *Vortex of Memphis*



George Ferrara, APSA  
*Lily Swirl*



Sheri Diggins *Schoolhouse*



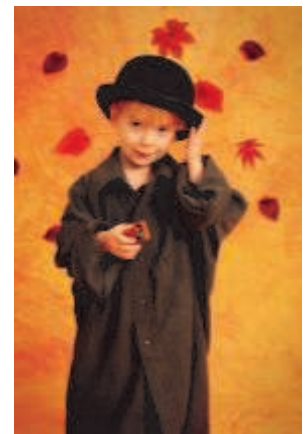
Becky Scott *Everest Climbers Memorial*



Sam Ruljancich *Mt. Baker Range*



Garet Munger *Magnolia*



Suvro Datta  
*Happy Halloween*

Print Division  
November 8th, 2011

Director: Alan Moodie  
Prints this evening = 26

### Small Monochrome Prints

Pamela Cain	<i>Nude Study</i>	41	1st * pc
Kerry Complita	<i>Serious on the Mekong Delta</i>	39	2nd
Paul Levy	<i>Brookings, Oregon</i>	39	2nd
Alicia Richards	<i>Balancing Act</i>	35	3rd
Doug McArthur	<i>Diamond Head Vista</i>	35	3rd

### Small Color Prints

Kerry Complita	<i>Red Rock Crossing</i>	39	1st * pc
Doug McArthur	<i>Butterfly #5</i>	38	2nd
Fred Fu	<i>Arch</i>	38	2nd
Fred Fu	<i>Sky Bridge</i>	37	3rd
Alicia Richards	<i>Just Woke Up</i>	37	3rd
Norman Share	<i>Lachine Lighthouse</i>	37	3rd pc
Pamela Cain	<i>Shilshole Bay</i>	35	



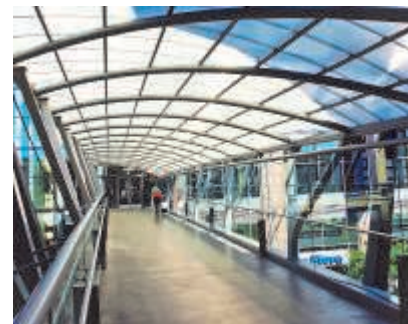
Fred Fu *Arch*

### Large Monochrome Prints

Sylvia Ewins	<i>Grain Elevators in Elliott Bay</i>	39	1st * pc
Ilene Samowitz	<i>Back in Time</i>	36	2nd

### Large Color Prints

Alan Moodie	<i>Cross-eyed</i>	40	1st *
Ilene Samowitz	<i>Mono Dawn</i>	39	2nd pc
Sylvia Ewins	<i>Reflections in Monument Valley</i>	39	2nd
Alan Moodie	<i>Hood Ornament</i>	39	2nd
Chris Diepenbrock	<i>The Grist Mill</i>	39	2nd pc
Paul Levy	<i>Mooning at the Wheelde</i>	38	3rd
Garet Munger	<i>Rose</i>	37	
Norman Share	<i>Yellow Pincushion</i>	37	
Dick McMahon	<i>Center for Urban Horticulture</i>	36	
Fletcher Pomeroy	<i>Steptoe Hills</i>	35	
Fletcher Pomeroy	<i>Spider Rock</i>	35	
Garet Munger	<i>Cheerios</i>	35	



Fred Fu *Sky Bridge*



Kerry Complita *Red Rock Crossing*

Judges: Paul Levy, Pamela Cain, Doug McArthur  
Commentator: Rein Karp Print Changer; Dick McMahon  
Tabulator: Jim Ewins Equipment – Room Setup; everyone  
\* = merit point, pc = peoples choice



Sylvia Ewins *Grain Elevators in Elliott Bay*



Sylvia Ewins *Reflections in Monument Valley*



Kerry Complita *Serious on the Mekong*

A View from the Board - A monthly summary of the Board Meeting - (November 2011)  
by Sheri Diggins

Authorized the Treasurer to choose a new bank for our checking account to avoid paying monthly fees.

Authorized Sam and Alan to buy lamps and bulbs to improve the lighting for the small group critique format on Print Nights.

Discussed how to encourage scheduling and participation in field trips. There will be an informal meeting for anyone interested after the meeting on January 17th.

Discussed creating a list of everything that needs to be done for set-up and tear down for meetings. Alicia to work on creating this list.

Approved \$25 stipends for the speaker and model for the November Education Night.

Discussed logistics for the December potluck.

**Continued to discuss new ways to add variety to meetings. Will try a “Photography Challenge of the Month” beginning on January 3rd.**

Education Night  
January 31

Paul Levy - *“Sharpening - in the lens and post processing.”*

- ◆ **Ever wondered what you are actually doing when you “sharpen” an image in post processing?**
- ◆ How much is too much?
- ◆ How does your choice of lens effect the image?

These questions and many more answered at this informative education night.

Projected Image Division

November 15, 2011

Maker	Title	Medium	Score	Award	PC
Altered Reality Category (6 images)					
George Ferrara	<i>Blue Teasel</i>	Digital	41	1st*	
Richard Hamann	<i>Chapel Abstract</i>	Digital	41	1st*	PC
Jon Mack	<i>Trojan</i>	Digital	40	2nd*	
Maurene Rutkin	<i>Cylinders Times Three</i>	Digital	38	3rd	
Norman N. Share	<i>Lachine Lighthouse under Sun</i>	Digital	38	3rd	
Sam Ruljancich	<i>Captured Rose</i>	Digital	38	3rd	
Nature Category (6 images)					
Ginger Jeromchek	<i>Zebra Longwing Butterfly</i>	Slide	42	1st*	PC
Kathy Admire	<i>Peregrine Falcon</i>	Digital	41	2nd*	PC
Ian Chapin	<i>Elk and Mist #2</i>	Digital	41	2nd*	
Dick McMahan	<i>White Berries</i>	Slide	38	3rd	
Wendy Engquist	<i>Curly Q's</i>	Digital	36		
Justin Engelman	<i>Slug Crossing</i>	Digital	36		
Open Category (19 images)					
Ilene Samowitz	<i>Greenbank Farms</i>	Digital	42	1st*	PC
Becky Scott	<i>Yaks at Everest Base Camp</i>	Digital	41	2nd*	
Kerry Complita	<i>Monk</i>	Digital	41	2nd*	PC
Sheri Diggins	<i>Ready for My Close-Up</i>	Digital	41	2nd*	
Chris Diepenbrock	<i>Mono Lake</i>	Digital	40	3rd	
Garet Munger	<i>Hill Climb #1</i>	Digital	40	3rd	
Gretchen Thompson	<i>Yosemite Clouds</i>	Digital	39		
Fran McCullough	<i>Cleat Hitch</i>	Digital	39		
Mike Livdahl	<i>Volunteer Park Conservatory #7</i>	Digital	39		
Jerry Dunbar	<i>Bug Eyed Monster from Detroit</i>	Digital	39		
Robert Rutkin	<i>Pathway of Color</i>	Digital	37		
Alicia Richards	<i>Dungeness Lighthouse and Mt. Baker</i>	Digital	37		
Eugene Collias	<i>Elanor</i>	Digital	37		
Al Koskie	<i>The Devil of the Alabama Hills</i>	Digital	37		
Rona Zevin	<i>Autumn Dreams</i>	Digital	36		
Julee Anne Jackson	<i>Piazza della Riforma</i>	Slide	36		
Geoffrey Haigh	<i>Guardian of the Steam</i>	Digital	36		
Fred Fu	<i>Ruins</i>	Digital	35		
Roy Cochran	<i>Graffiti Cop</i>	Slide	35		

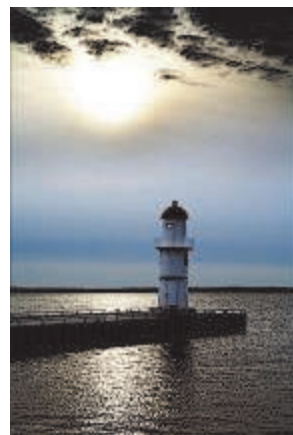
\* One Merit Point is awarded to the makers of the images in each category that receive 1st and 2nd place and score 39 or above.

PC - People's Choice - This image was voted best in its category by persons present.

Projected Coordinator Alicia Richards  
 Tabulator /Announcer Jon Mack  
 Digital Director Jim Downar  
 Commentator Morrie Carter  
 Judges Sam Ruljancich, Mike Livdahl, Becky Scott



George Ferrara  
*Blue Teasel*



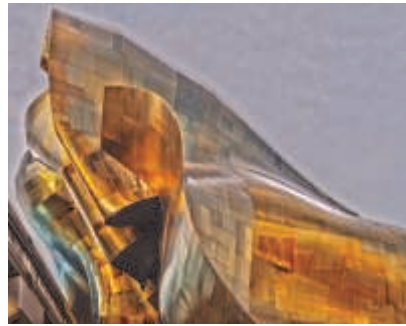
Norman N. Share  
*Lachine Lighthouse under Sun*



Justin Engelman  
*Slug Crossing*



Richard Hamann *Chapel Abstract*



Jon Mack *Trojan*



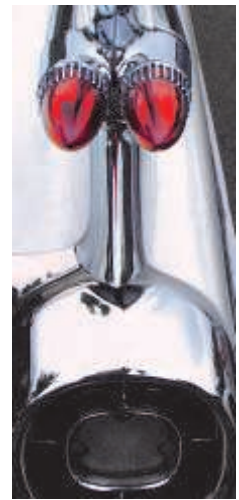
Ilene Samowitz  
*Greenbank Farms*



Ginger Jeromchek *Zebra Longwing Butterfly*



Kathy Admire *Peregrine Falcon*



Jerry Dunbar  
*Bug Eyed Monster from Detroit*



Ian Chapin *Elk and Mist #2*



Becky Scott *Yaks at Everest Base Camp*



Kerry Complita *Monk*



Sheri Diggins *Ready for My Close-Up*



Eugene Collias  
*Elanor*

## Assignment

January 17th

Altered Reality - *Green*

### What comes to mind when you hear the word “green?”

If you submit an image in the Altered Reality Category, it must fit the assignment. It must also meet the requirements for the Altered Reality Category - **the maker has deliberately and obviously “altered reality”** to produce a special effect. The image is no longer a true or realistic presentation of the subject, *and would not usually be viewed as a natural image.*

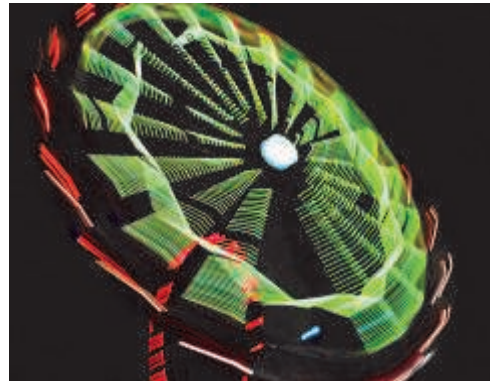
Your other choice is to submit an image which meets the requirements for the Open or Nature Category.



Jacque Hodgen *Aspen Grove*



Jerry Dunbar *Still Life*



Maureen Rutkin *Spinning Wheel*



Richard Hamann *Chapel Abstract*

## New Members

SPS wishes to welcome new members Dave Johanson, Steve Cummings, and Daniel Heller.

## Field Trip Report

By Sam Ruljancich

In October SPS members Jacque Hodgen, Beverly and Doug McArthur joined me in an architectural field trip. It was one of many tours offered by the Seattle Architecture Foundation. We chose to do the community tour Harvard Belmont District: The Rich Life on Capitol Hill.

We meet on a Saturday morning with the first task of finding parking on **Capitol Hill. We meet at a resident's circular drive that one often sees in** these classic historical homes. The weather was great. Sunny, no wind and with great fall colors with all the leaf bearing trees you find lining these streets. Being there was 15-20 on the tour tripods were not workable. So being the only serious photographers on the tour we were the laggards of the group, with Jacque usually behind getting some secret shots. It was a combination of listening to some of the historical talks mixed with taking times for photography. Fortunately it was near Halloween so many houses were decorated to my surprise.

Overall it was a good day for a walk, learning some history of our city, viewing some great homes and yards, and taking some photos on streets that we had never explored before. The company was good and we had fun. Here are a few images from this field trip that we would like to share.

Hopefully we will have more field trips.



Sam Ruljancich



Beverly McArthur  
Wrought Iron Gate



Jacque Hodgen



Sam Ruljancich

Seattle Photographic Society  
c/o Crown Hill United Methodist Church  
8500 14<sup>th</sup> Avenue NW  
Seattle, WA 98117

[www.SeattlePhotographic.com](http://www.SeattlePhotographic.com)

## SPS Meeting and Events Schedule

January 3	Projected Night
January 10	Print Night
January 17	Projected Night - Assignment - Altered Reality - <i>Green</i>
January 24	Board Meeting (7 pm)
January 31	Education Night - Paul Levy - <i>Sharpening</i>

Meetings are held every Tuesday evening beginning at 7:30 PM at Crown Hill United Methodist Church located at 8500 14th Ave NW, Seattle, WA 98117.